

INVESTOR INFORMATION

As of March 31, 2004

ESTABLISHED

April 1, 1986

COMMON SHARES

Authorized: 1,700,000,000

Issued: 631,705,087

PAID-IN CAPITAL

¥51,887 million

STOCK LISTINGS

Tokyo, Osaka, Nagoya

NUMBER OF SHAREHOLDERS

43,255

TRANSFER AGENT

The Chuo Mitsui Trust & Banking

Co., Ltd.

33-1, Shiba 3-chome, Minato-ku, Tokyo

105-8574, Japan

INDEPENDENT CERTIFIED

PUBLIC ACCOUNTANTS

AZSA & Co.

INQUIRIES: IR GROUP

1-1, Shibaura 1-chome, Minato-ku,

Tokyo 105-8528, Japan

Phone: (03) 3798-3211

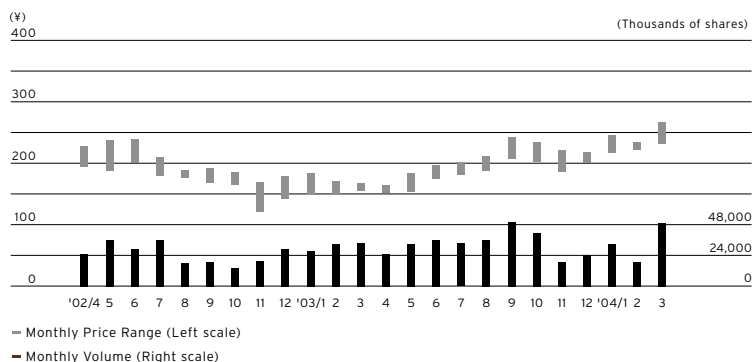
Fax: (03) 3798-3237

URL: <http://www.cosmo-oil.co.jp>

PRINCIPAL SHAREHOLDERS

	Number of shares owned (Thousands)	Percentage of total shares issued
Japan Trustee Services Bank, Ltd. (trust account)	54,459	8.62%
The Master Trust Bank of Japan, Ltd. (trust account)	31,337	4.96
Mizuho Corporate Bank, Ltd.	31,320	4.95
UFJ Bank Ltd.	25,268	4.00
Mitsui Sumitomo Insurance Company, Limited	21,878	3.46
Cosmo Oil Employees' Shareholding Association	19,515	3.08
The Kansai Electric Power Co., Inc.	18,600	2.94
The Tokio Marine and Fire Insurance Company, Limited	16,335	2.58
Sompo Japan Insurance Inc.	15,792	2.49
Nippon Life Insurance Company	11,985	1.89

PRICE RANGE OF STOCK AND TRADING VOLUME





19:07

- > Cosmo Oil has set a path of progress for itself as a company, while keeping its eye on the needs of society. The Company is dedicated to providing the energy that is essential for day-to-day living. Looking toward the future, Cosmo Oil is with you now, all throughout the day.